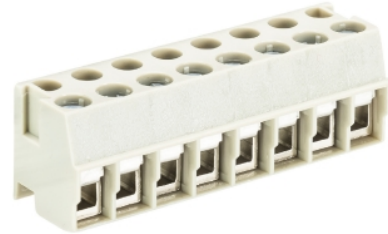


## Data sheet

Commercial Art.No.: 25.600.3453.0

Pluggable PCB Terminal 8142 / 14

Pluggable-PCB terminal with screw connection with wire protection, 14 poles, printed version, max. cross section: 2.5 mm<sup>2</sup>, pitch: 5 mm, type of packing: carton, color: grey



Certificates / Approvals



## Technical data

### General

Modular spacing	5 mm
Connection type	Screw connection
Soldering process	None
Packaging	Carton
Number of poles	14
Marking	Yes
Mating direction towards connector	90°

### Technical data

Nominal cross section	2.5 mm <sup>2</sup>
Rated current	8 A
Overvoltage Category I	1000 V
Overvoltage Category II	250 V
Overvoltage Category III	200
Rated impulse voltage	4 kV
Wire strip length	5 mm

### Connection Data

Minimum cross section solid	0.14 mm <sup>2</sup>
Maximum cross section solid	4 mm <sup>2</sup>
Minimum cross section fine stranded	0.14 mm <sup>2</sup>
Maximum cross section fine stranded	2.5 mm <sup>2</sup>
Wire strip length	5 mm

### Technical Data UL/CSA

Cross section UL	22-12 AWG
Voltage UL	300 V
Current field wiring	15 A
Current factory wiring	15 A
Cross section CSA	22-12 AWG
Voltage CSA	300 V

Current CSA	15 A
-------------	------

**Other**

Type of insulation material	Thermoplastic
Color	Grey
Height	13 mm
Length	70 mm
Depth	11.5 mm
Material attachment screw	Steel
Material contact base	CuSn
Material contact surface	Sn

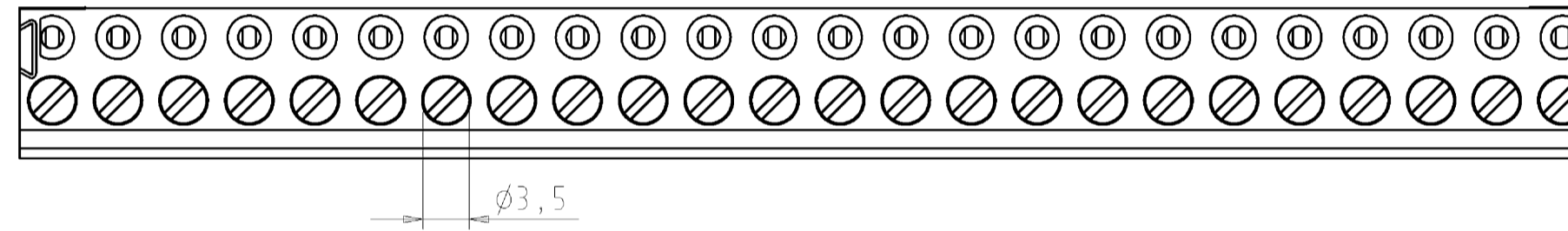
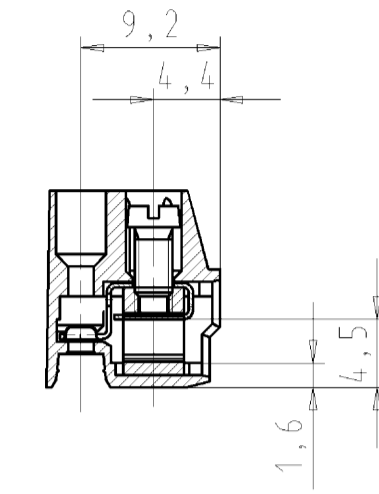
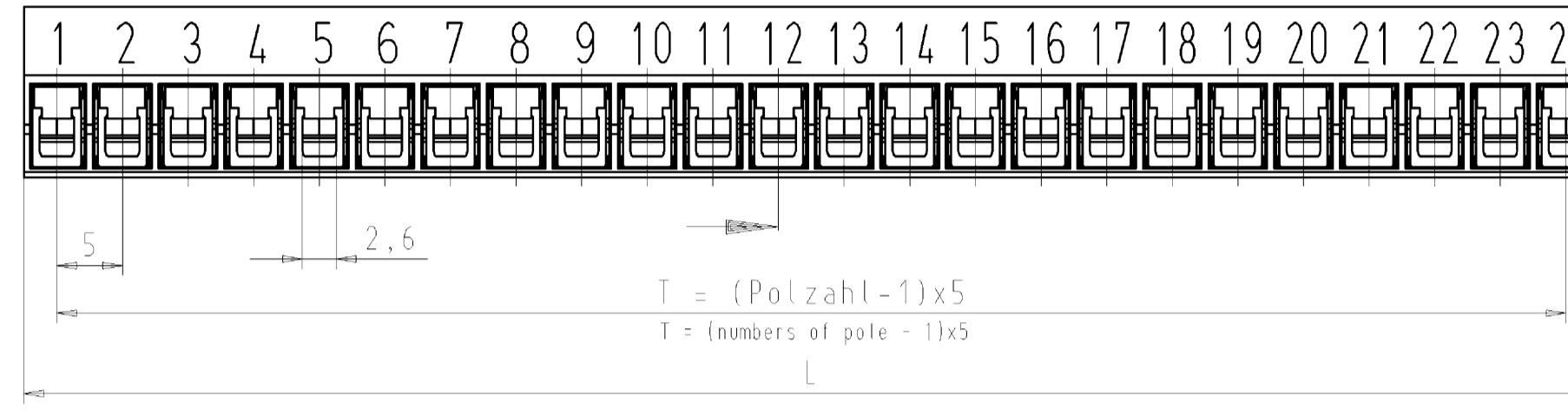
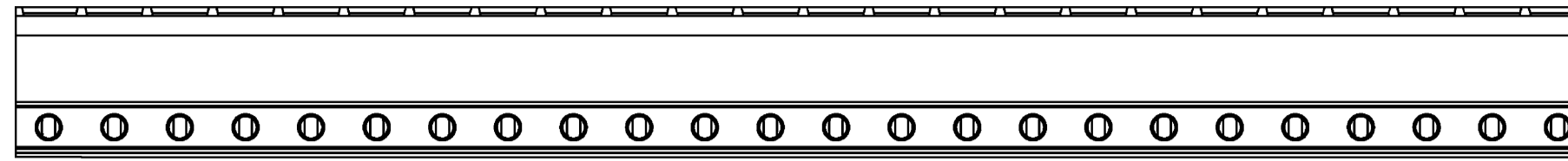
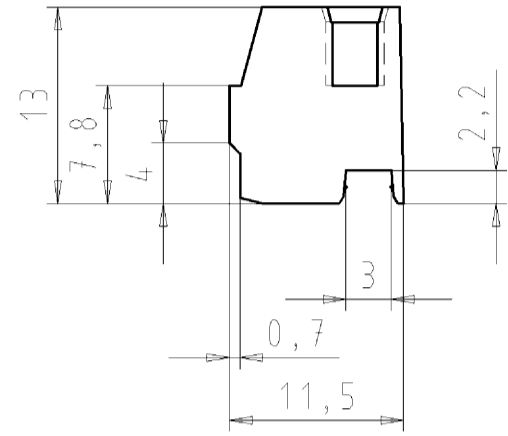
**Classification**

ECLASS 11	
ECLASS 8.1	27440402
ETIM 7.0	EC002637
ETIM 6.0	EC002637
ETIM 5.0	EC002637

**Product compliance**

ROHS conformity status	Compliant/Exempted
ROHS exceptions	III-6(c)
REACH-SVHC conformity status	Duty-To-Declare
REACH-SVHC substances	Lead
REACH-SVHC CAS numbers	7439-92-1

Gezeichnet/drawn:  
25.600.4453.0



25.600.4453.F	8142/24	24	115	120
25.600.4353.F	8142/23	23	110	115
25.600.4253.F	8142/22	22	105	110
25.600.4153.F	8142/21	21	100	105
25.600.4053.F	8142/20	20	95	100
25.600.3953.F	8142/19	19	90	95
25.600.3853.F	8142/18	18	85	90
25.600.3753.F	8142/17	17	80	85
25.600.3653.F	8142/16	16	75	80
25.600.3553.F	8142/15	15	70	75
25.600.3453.F	8142/14	14	65	70
25.600.3353.F	8142/13	13	60	65
25.600.3253.F	8142/12	12	55	60
25.600.3153.F	8142/11	11	50	55
25.600.3053.F	8142/10	10	45	50
25.600.2953.F	8142/ 9	9	40	45
25.600.2853.F	8142/ 8	8	35	40
25.600.2753.F	8142/ 7	7	30	35
25.600.2653.F	8142/ 6	6	25	30
25.600.2553.F	8142/ 5	5	20	25
25.600.2453.F	8142/ 4	4	15	20
25.600.2353.F	8142/ 3	3	10	15
25.600.2253.F	8142/ 2	2	5	10
Teile-Nr. part-no.	Typ type	Polzahl pole	T	L

.F	Farbe/colour
.0	grau/grey
.1	schwarz/black
.9	orange/orange

Weitere Daten siehe Katalog  
further data see catalog

Tolerierung Size ISO 14405/Tolerance system Size ISO 14405 (This ISO-standard describes the envelope principle. According to the envelope principle the deviations of form and parallelism are limited by the size tolerances).		ja/yes <input checked="" type="checkbox"/> Stoffverhalts- und Deklarationsliste nach UU-TQM-05/03 ist einzuhalten. Conformity with Wieland document UU-TQM-05/03 (list of prohibited / declarable hazardous substances) to be declared!																																																						
Freitoleranz nach DIN ISO 2768 - m	CAD - Zeichnung, keine manuellen Änderungen CAD - drawing, no manual modifications allowed	1. Verwendung: First Use: -																																																						
<table border="1"> <thead> <tr> <th>Index</th> <th>Datum / Blatt Date / Sheet</th> <th>Werkstoff/Material</th> <th>2012</th> <th>Tag/Date</th> <th>Name</th> <th>Zeichnung Nr./Drawing No.</th> <th>Index</th> </tr> </thead> <tbody> <tr> <td>/</td> <td>/</td> <td>Maßstab/Scale</td> <td>gezeichnet drawn</td> <td>12.12.</td> <td>Dutsch T.</td> <td rowspan="2">T 25.600.2253.0 01K</td> <td rowspan="2">Maße in mm/Dimensions are in mm</td> </tr> <tr> <td>/</td> <td>/</td> <td>2:1</td> <td>geprüft checked</td> <td>-</td> <td>-</td> </tr> <tr> <td>/</td> <td>/</td> <td>Vol.</td> <td>Werkstuf./Surf.</td> <td>mm</td> <td>Ersatz für/Replacement for: -</td> <td colspan="2">Benennung/Title</td> </tr> <tr> <td>/</td> <td>/</td> <td colspan="2">wieland</td> <td>Type</td> <td colspan="3">PLUGGABLE PCB TERMINAL LP_STECKKLEMME</td> </tr> <tr> <td>/</td> <td>/</td> <td colspan="2">Elektrische Verbindungen</td> <td>s. Tabelle see table</td> <td colspan="3">2 - 24 polig/poles</td> </tr> <tr> <td>Änderung/Revision</td> <td></td> <td colspan="6"></td> </tr> </tbody> </table>		Index	Datum / Blatt Date / Sheet	Werkstoff/Material	2012	Tag/Date	Name	Zeichnung Nr./Drawing No.	Index	/	/	Maßstab/Scale	gezeichnet drawn	12.12.	Dutsch T.	T 25.600.2253.0 01K	Maße in mm/Dimensions are in mm	/	/	2:1	geprüft checked	-	-	/	/	Vol.	Werkstuf./Surf.	mm	Ersatz für/Replacement for: -	Benennung/Title		/	/	wieland		Type	PLUGGABLE PCB TERMINAL LP_STECKKLEMME			/	/	Elektrische Verbindungen		s. Tabelle see table	2 - 24 polig/poles			Änderung/Revision								Blatt: 1 von 1 Sheet: 1 of 1
Index	Datum / Blatt Date / Sheet	Werkstoff/Material	2012	Tag/Date	Name	Zeichnung Nr./Drawing No.	Index																																																	
/	/	Maßstab/Scale	gezeichnet drawn	12.12.	Dutsch T.	T 25.600.2253.0 01K	Maße in mm/Dimensions are in mm																																																	
/	/	2:1	geprüft checked	-	-																																																			
/	/	Vol.	Werkstuf./Surf.	mm	Ersatz für/Replacement for: -	Benennung/Title																																																		
/	/	wieland		Type	PLUGGABLE PCB TERMINAL LP_STECKKLEMME																																																			
/	/	Elektrische Verbindungen		s. Tabelle see table	2 - 24 polig/poles																																																			
Änderung/Revision																																																								

Weitergabe sowie Vervielfältigung dieses Dokuments, Verwertung und Mitteilung seines Inhalts sind verboten, soweit nicht ausdrücklich gestattet.  
The reproduction, distribution and utilization of this document as well as the communication of its contents to others without express authorization is prohibited.